

Scottish Borders Council
Town And Country
Planning (Scotland) Act
1997

REFUSED

subject to the
requirements of the
associated Decision
Notice

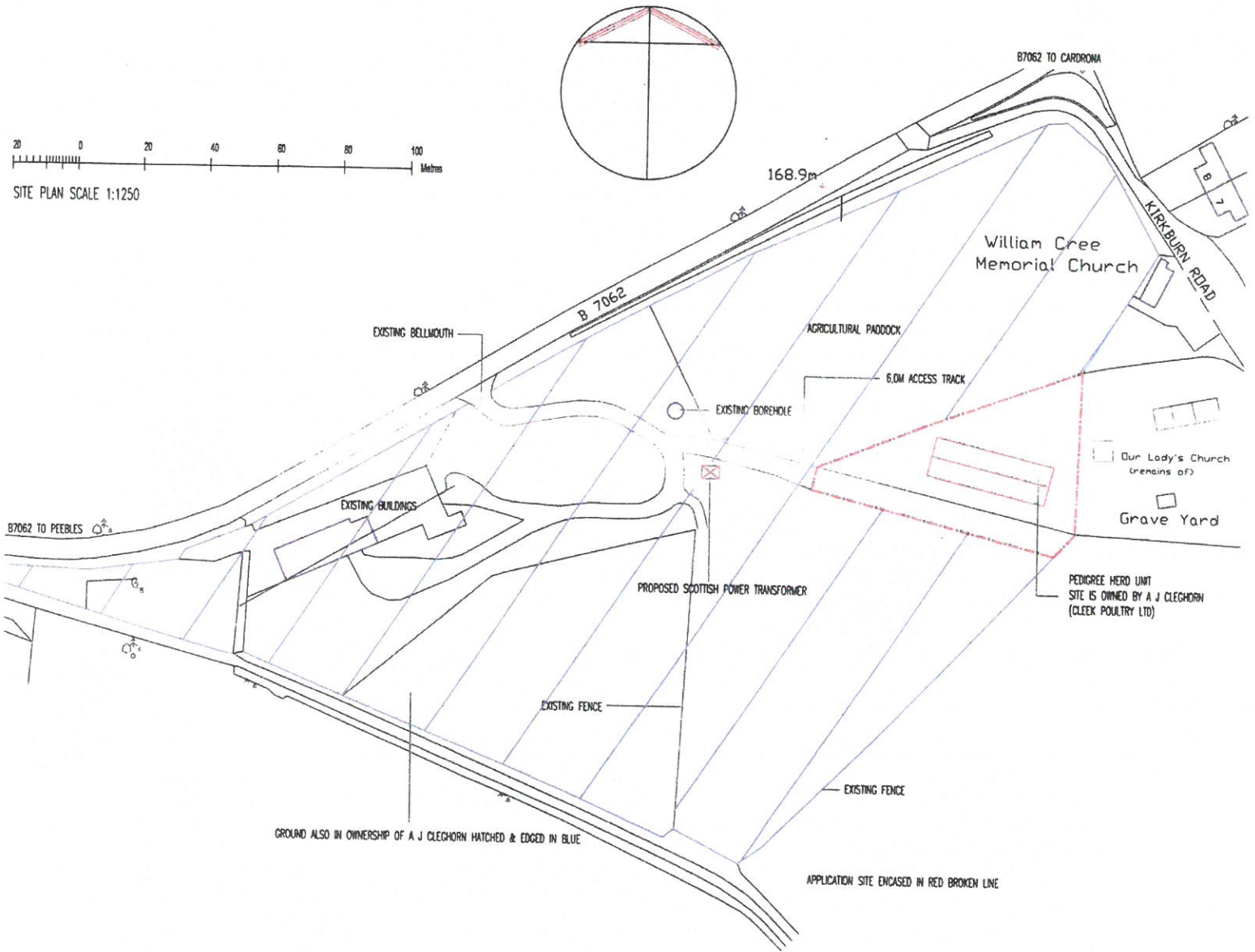
AMENDMENTS		
A		
B		
C		
D		
E		
F		

SCALE 1:1250 NOV 2016

drg 196 70
REVISION --

SITE PLAN

PROPOSED PEDIGREE CATTLE UNIT FOR STORE
CATTLE WITH WELFARE ACCOMMODATION
KIRKURN, CARDRONA, PEEBLES, EH45 9HU
Cleek Poultry Ltd



20 0 20 40 60 80 100 Metres
SITE PLAN SCALE 1:1250

GROUND ALSO IN OWNERSHIP OF A J CLEGHORN HATCHED & EDGED IN BLUE

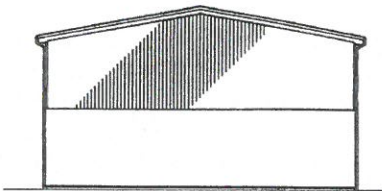
APPLICATION SITE ENCASED IN RED BROKEN LINE

1 0 2 4 5 Metres ALL DRAWINGS ON THIS SHEET AT 1:200

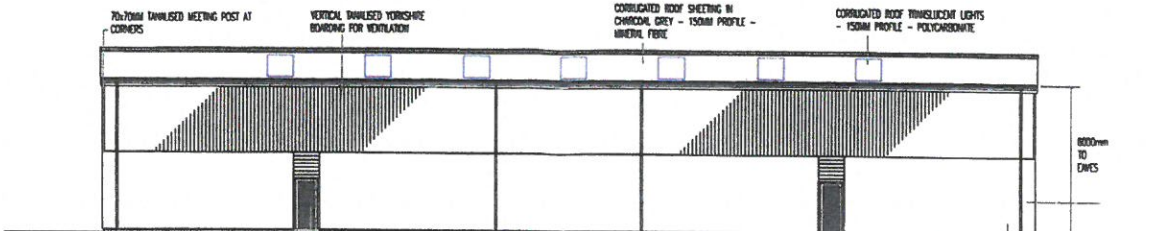
Scottish Borders Council
Town And Country
Planning (Scotland) Act
1987

REFUSED

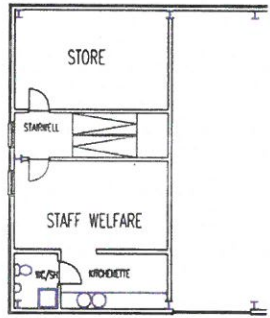
subject to the
requirements of the
associated Decision
Notice



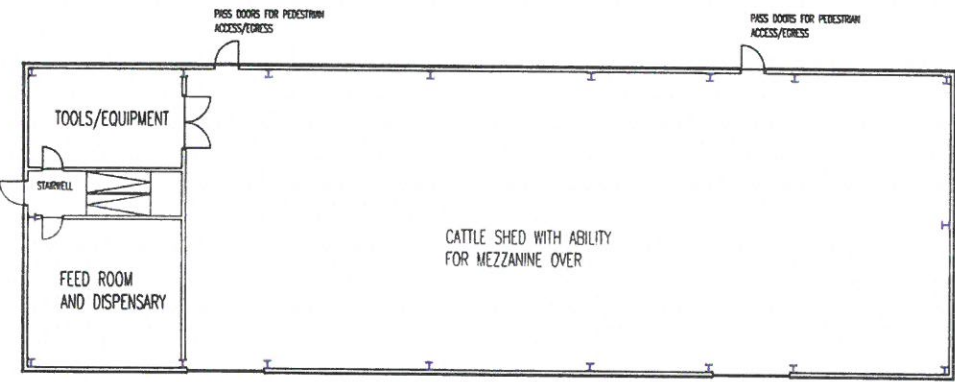
SOUTH EAST



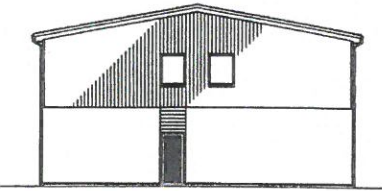
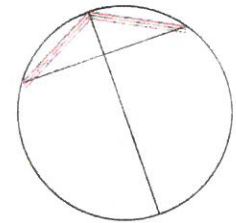
NORTH EAST



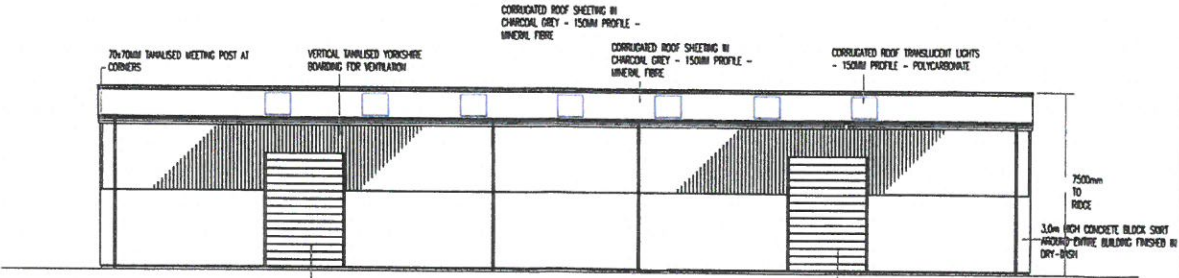
GENERAL ARRANGEMENT
mezzanine level



GENERAL ARRANGEMENT
ground floor



NORTH WEST



SOUTH WEST

REVISIONS	DATE	BY	DESCRIPTION
A			
B			
C			
D			
E			

SCALE 1:200 NOV 2016

drg 196 71
REVISION -- GENERAL ARRANGEMENT

PROPOSED PEDIGREE CATTLE UNIT FOR STORE
CATTLE WITH WELFARE ACCOMMODATION
KIRKBURN, CARDRONA, PEEBLES, EH45 9HU
Cleek Poultry Ltd